

Sealodrain Total Drain

Total-Drain Application



Commercial Product Data Sheet

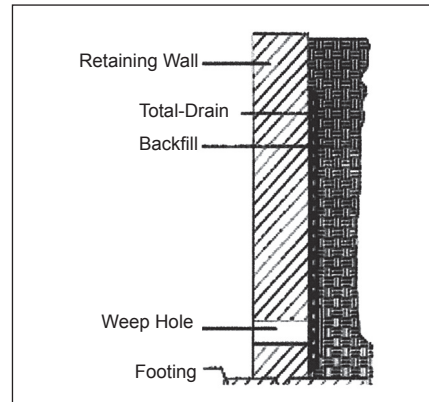
Clean wall/Waterproof/Insulate

Clean wall and apply waterproofing or insulation if required.

Installing first roll of Sealodrain

The first row of Sealodrain is installed at the bottom of the wall. The edge of the core with the flange should be at the top. This flange position minimizes seepage of water behind the Sealodrain similar to the way roof shingles work.

For basement walls or slabs where Sealoflex Sealodrain will be used, position lower edge of Sealodrain core horizontally on footing with fabric away from wall. Pull fabric away from lower 12" of sheet. Place the Sealodrain on footing with small ends of cones of core facing Sealodrain. Tuck Sealodrain fabric around and under Sealodrain. Close the upstream end of Sealodrain to prevent soil intrusion by folding behind the drain. Tape upstream end of Sealodrain.

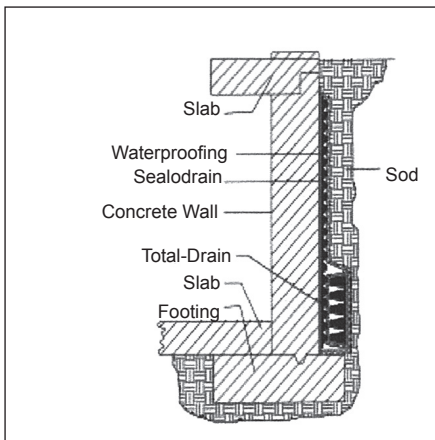


Installing the next roll of Sealodrain

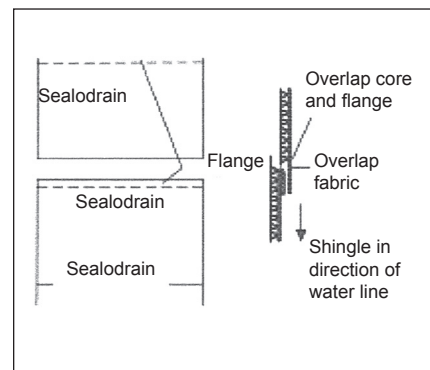
Attach the next roll of Sealodrain by butting the beginning of second roll against the end of first roll. Connect next roll of Sealodrain with standard straight connector. Tape joints to prevent soil intrusion.

Sealing edges of Sealodrain

All edges of Sealodrain should have fabric tucked behind core to prevent soil from entering core. Open ends of Sealodrain.



For retaining walls or foundation walls where Sealoflex Sealodrain will not be used, set Sealodrain at bottom of wall with fabric side toward soil. The edge of core with flange should be up. Cut 1/2" diameter holes in flat back of core (opposite fabric) at weep hole locations; do not cut fabric. Tuck extra fabric at bottom under edge of core. Attach drain with appropriate attachment method. Fold fabric under core to close upstream end.



Going around corners

For inside corners, bend sheet drain around corner. Cut fabric on wall side of Sealodrain to bend around corner. For outside corners, cut Sealodrain core to reach around corner and provide 3" of extra fabric to wrap and overlap fabric around corner. Bend Sealodrain around corner.

Sealodrain Total-Drain

Installing next row of drain

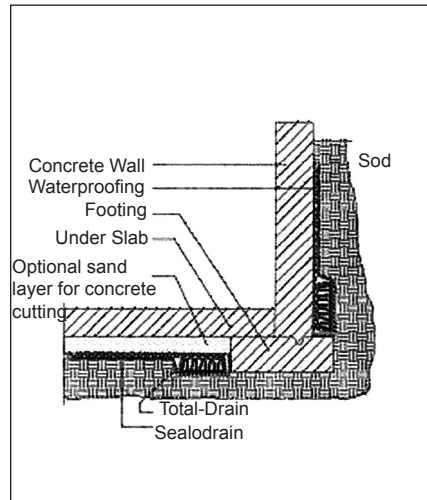
If the wall requires additional drain above the bottom row, install as shown in the drawing below. Fold down fabric of lower drain. Place cones of upper drain over lower drain. Use tape or spray adhesive, if necessary, to keep fabric in place prior to backfilling.

Backfilling

Soil should be placed and compacted directly against the drain. Direct compactor exhaust away from drain to prevent damage. Backfill to a minimum 6" above drain to allow for coverage after settlement.

Installation under slabs

For under slab installation, position drain as shown below. Otherwise, installation is the same as for vertical walls.



Physical and Mechanical Properties

Property (as Manufactured)	Value
Flow Capacity (ASTM D4716) Sheet Drain, gpm/ft. of width High=profile, gpm	16 100
Roll length	50 feet
Roll width	2 feet
Roll weight	30 lbs.

Ed. May 2015