

# GRR Flood Coat

## Gravel Roof Recovery System



### Commercial Product Data Sheet

#### Description

GRR Flood Coat is a high solids, waterbased, rubber-reinforced filler for leveling the surface of gravel roofs prior to installation of the Sealoflex Waterproofing System. When properly applied, GRR Flood Coat provides a sufficiently smooth, gravel free surface suitable for conversion into a high quality seamless membrane roof offering exceptional durability and improved appearance.

#### Uses

GRR Flood Coat is designed to fill the spaces and voids that exist after removal of all loose gravel from existing roof surface. When properly applied, it covers all protruding gravel to form a flat continuous base for the Sealoflex Flexible Waterproofing System

#### Advantages

- Fills spaces and voids between the remaining gravel
- Levels to form a smooth base for subsequent Sealoflex Waterproofing System
- Adds strength and reinforcement to the existing roof
- Dries quickly to minimize delays

#### Coverage

15-25 gallons per sq., and may vary according to the surface profile to which it is being applied.

Sealoflex recommends a test area to verify job specific coverage.

#### Application

1. Remove all loose gravel from the roof by vacuum or conventional means and all loose sand and grime by power washing.
2. Pour GRR Flood Coat and spread over the surface with a rubber squeegee so that the squeegee runs over the highest protruding gravel.
3. Before application of the Sealoflex waterbased Waterproofing System or Sealoflex CT Waterproofing System, (see "Important Notes"), make certain that the GRR Flood Coat is completely dry. This can be determined by attempting to penetrate the GRR Flood Coat with a probe at its deepest point of application. If it can be penetrated and the probe appears wet (blue/white color), allow more time to dry. For most applications, 12 hours of dry conditions is sufficient to completely dry GRR Flood Coat.

#### Description

Clean all tools and equipment with water immediately after use. Cured material can only be removed mechanically.

#### Important Notes

Typically, gravel roofs have poor slope/drainage. Therefore, the Sealoflex CT System is recommended.

*ALWAYS USE SEALOFLEX FABRIC WITH THE GRR SYSTEM. DO NOT USE DECK FABRIC.*

GRR Floodcoat is NOT a waterproof compound, it is only water resistant. Therefore, even after it is completely dry, it is important that no ponding conditions occur before the application of the Sealoflex CT System, as GRR Floodcoat will become unstable.

*Please contact Sealoflex Technical Department for additional details.*

#### **WARNING!**

**DO NOT** plunge, submerge, dip, etc. applicator tools (rollers, brushes, etc.) into CT™ buckets due to static electricity buildup. Sparks/Fire may result. Always **pour** CT™ products from the container onto the substrate.

#### **CT™ PRODUCTS ARE FLAMMABLE!**

Electrostatic charge may accumulate and create a hazardous condition when handling or applying CT™ products.

**ALWAYS USE PROPER GROUNDING PROCEDURES.**

**ALWAYS HAVE A CO<sub>2</sub> FIRE EXTINGUISHER WITHIN IMMEDIATE REACH OF THE APPLICATION AREA.**

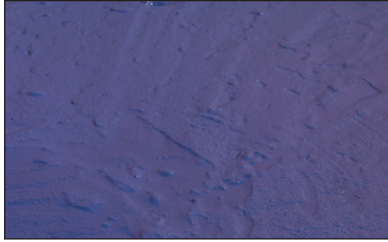
# GRR Flood Coat



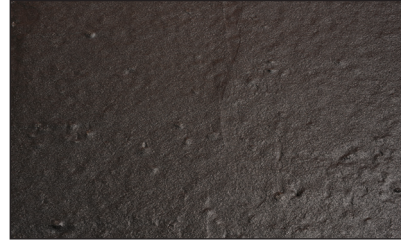
*GRR Flood Coat being poured out of bucket*



*Spread GRR Flood Coat*



*GRR Flood Coat is dark blue when wet*



*GRR Flood Coat dries black*

## Physical and Mechanical Properties

Type	Rubber Reinforced Filler
Shelf Life and Storage Conditions	6 months if unopened & stored between 40°F & 90°F <i>DO NOT ALLOW TO FREEZE</i>
Application Temperature	+45°F to 95°F (Ambient)
Drying Rate at Ambient Temperature	Allow approximately 12 hours before applying the next coating
Physical Properties	Solids: 85% to 87% pH: 7.0 to 8.0 Viscosity: 15,000 to 20,000 cps Weight per Gallon: 12.9 lbs
Packaging	5 gallon containers

Ed. June 2016