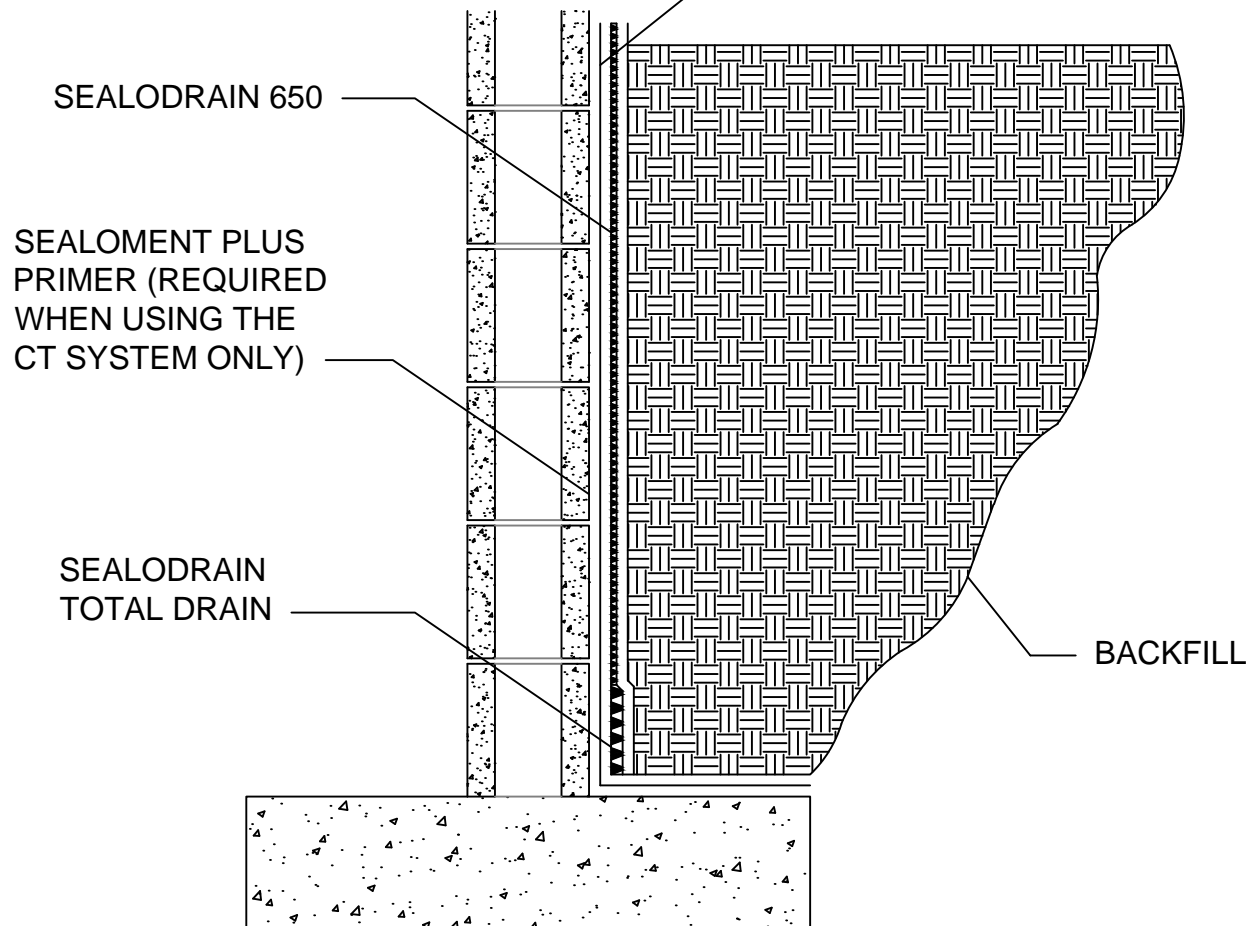


FOUNDATION WALL AND FOOTER DETAIL

SPACES EXAGGERATED TO
SHOW LAYER DISTINCTION

WATERPROOFING SYSTEM
EXTENDED 2" MIN. ABOVE
THE TOP OF THE SOIL



Note: Buried finishes require the use of the Enviroflex or CT Systems only.

General Notes:

- Approved for all Sealoflex warranties.
- Follow steps for any necessary priming as outlined in specifications manual.
- Follow steps for application as outlined in specifications manual.
- All Sealoflex fabric to overlap a minimum of 3" when 2 pieces come together or when there is a change in plane.
- Use two separate pieces of Sealoflex fabric at edges and penetrations.