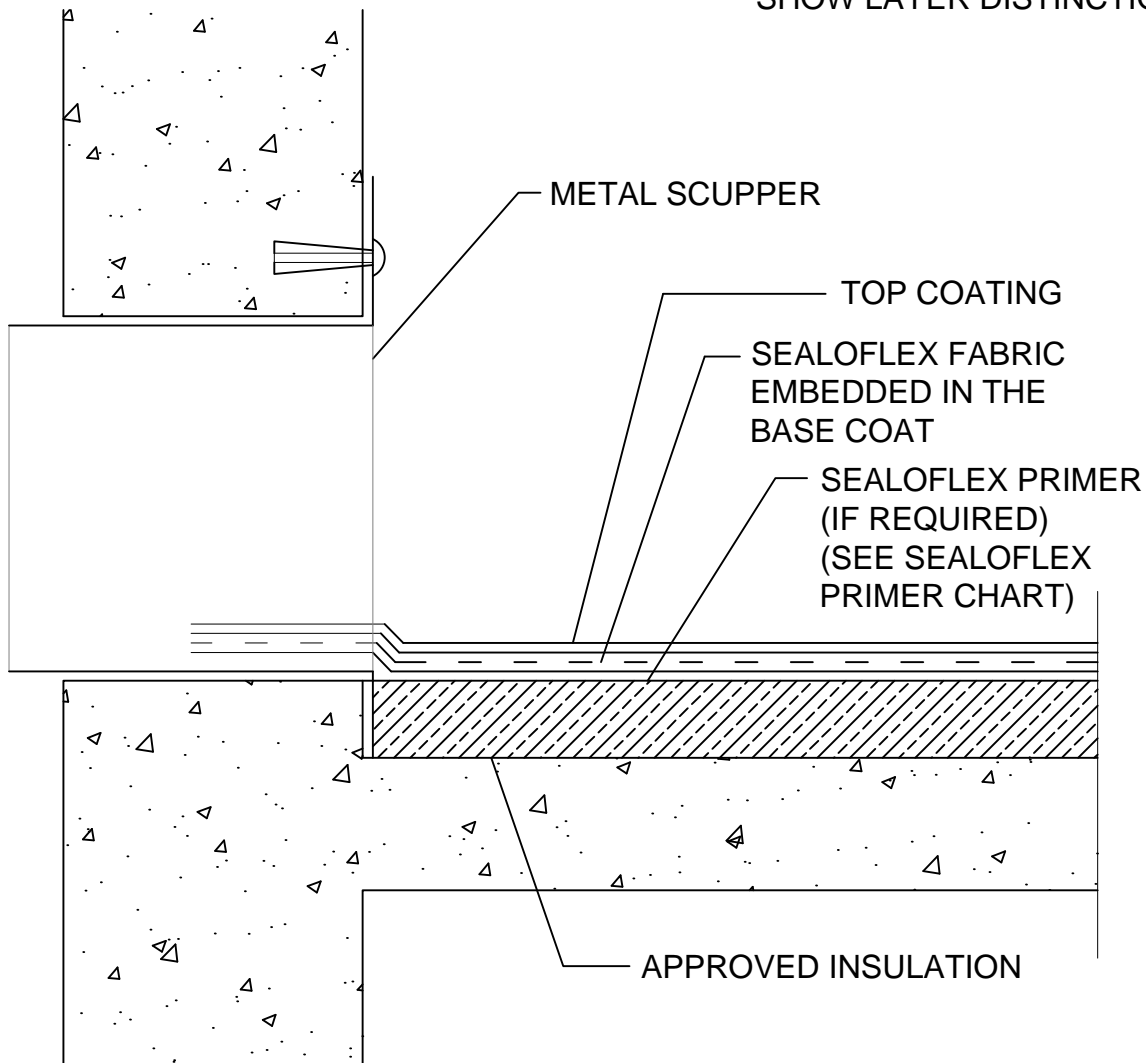


## SCUPPER WITH INSULATION FLASHING DETAIL

SPACES EXAGGERATED TO  
SHOW LAYER DISTINCTION



### General Notes:

- Approved for all Sealoflex warranties.
- Follow steps for any necessary priming as outlined in specifications manual.
- Follow steps for application as outlined in specifications manual.
- All Sealoflex fabric to overlap a minimum of 3" when 2 pieces come together or when there is a change in plane.
- Use two separate pieces of Sealoflex fabric at edges and penetrations.