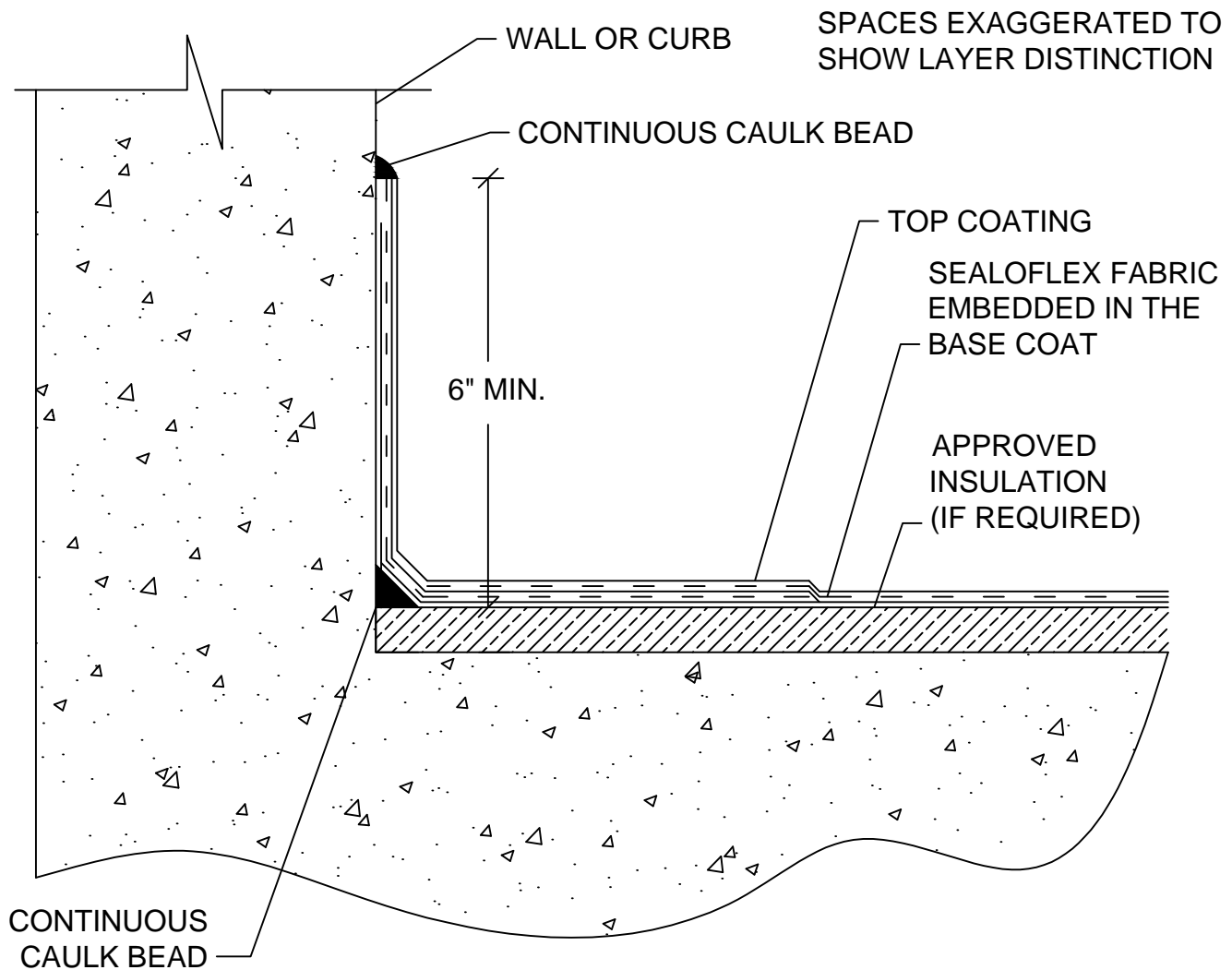


## BASE FLASHING WITH INSULATION DETAIL



*Note: Wall finish may be applied over the vertical portion of the Sealoflex Flashing to terminate at the junction of floor and wall.*

### General Notes:

- Approved for all Sealoflex warranties.
- Follow steps for any necessary priming as outlined in specifications manual.
- Follow steps for application as outlined in specifications manual.
- All Sealoflex fabric to overlap a minimum of 3" when 2 pieces come together or when there is a change in plane.
- Use two separate pieces of Sealoflex fabric at edges and penetrations.