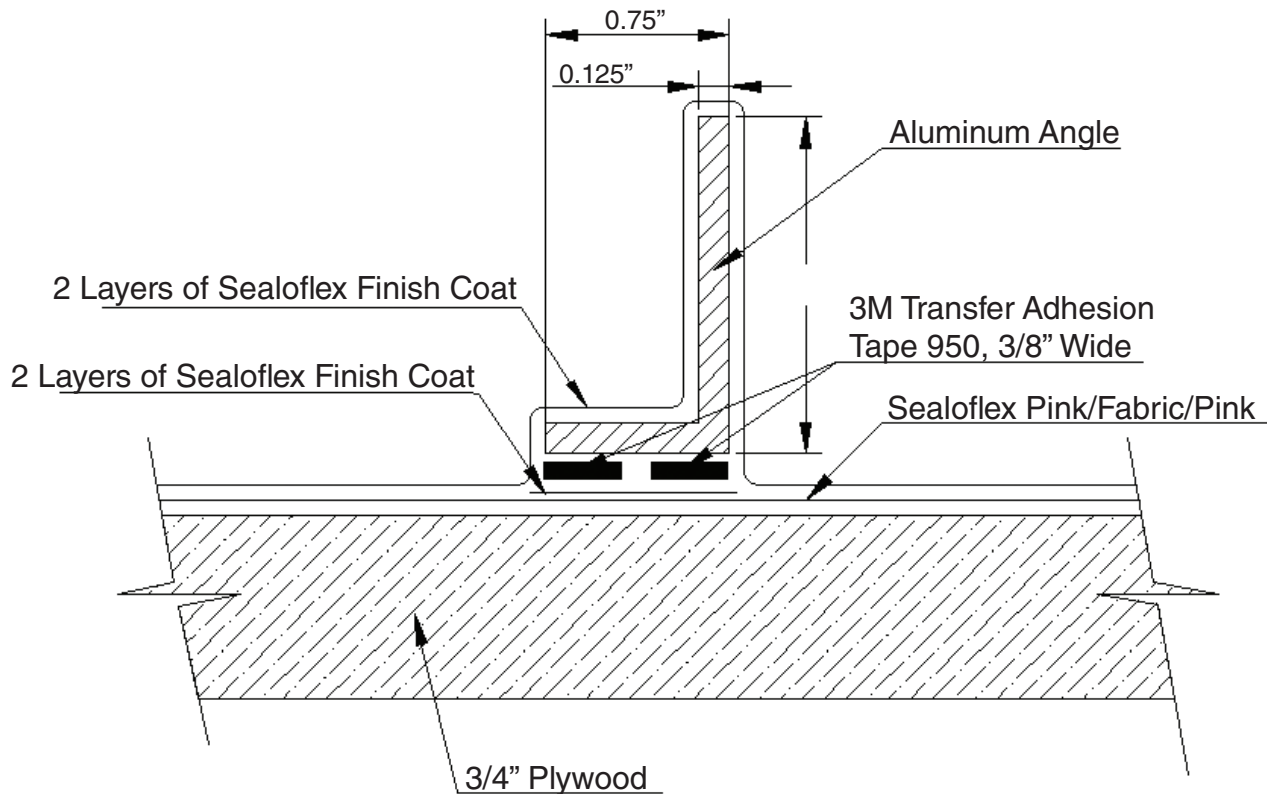


Faux Standing Seam Roof over Plywood



NOTE:

1. The above detail will repeat at 16" on center over the field of the roof.
2. It may be necessary to adhere a 1/4" gypsum board (e.g. Densdeck®) to the plywood surface before applying Sealoflex depending on fire regulations.

General Notes

- Approved for all Sealoflex warranties.
- Follow steps for any necessary priming as outlined in specifications manual.
- Follow steps for application as outlined in specifications manual.
- All Sealoflex fabric to overlap a minimum of 3" when 2 pieces come together.
- All Sealoflex fabric to overlap a minimum of 3" when there is a change in plane.
- Use two separate pieces of Sealoflex fabric at edges and penetrations.