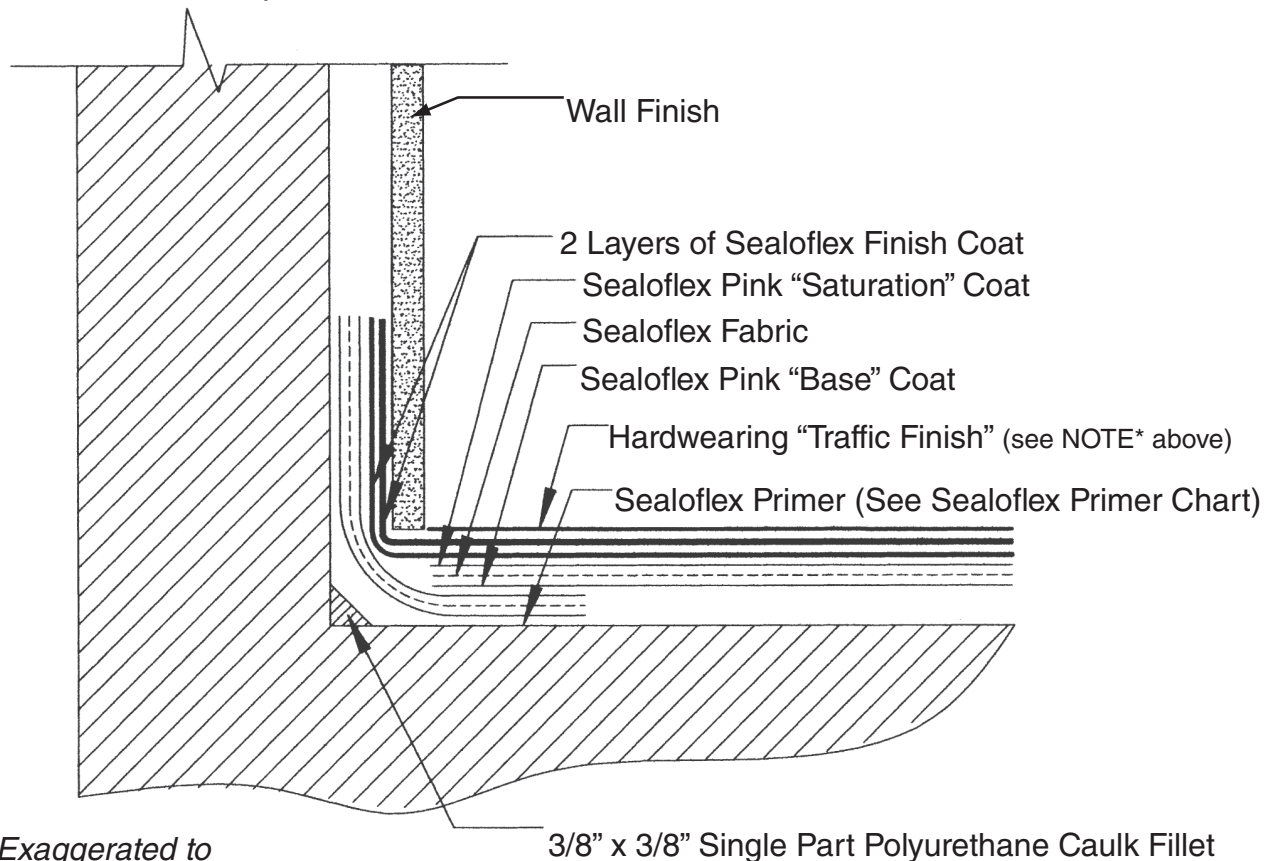


Wall Flashing Detail for Decks

NOTE:* "Traffic Finish" Options: 2 coats Wearcoat OR Coraflex with 2 coats Wearcoat Clear



Space Exaggerated to
show layer distinction

General Notes

- Approved for all Sealoflex warranties.
- Follow steps for any necessary priming as outlined in specifications manual.
- Follow steps for application as outlined in specifications manual.
- All Sealoflex fabric to overlap a minimum of 3" when 2 pieces come together.
- All Sealoflex fabric to overlap a minimum of 3" when there is a change in plane.
- Use two separate pieces of Sealoflex fabric at edges and penetrations.