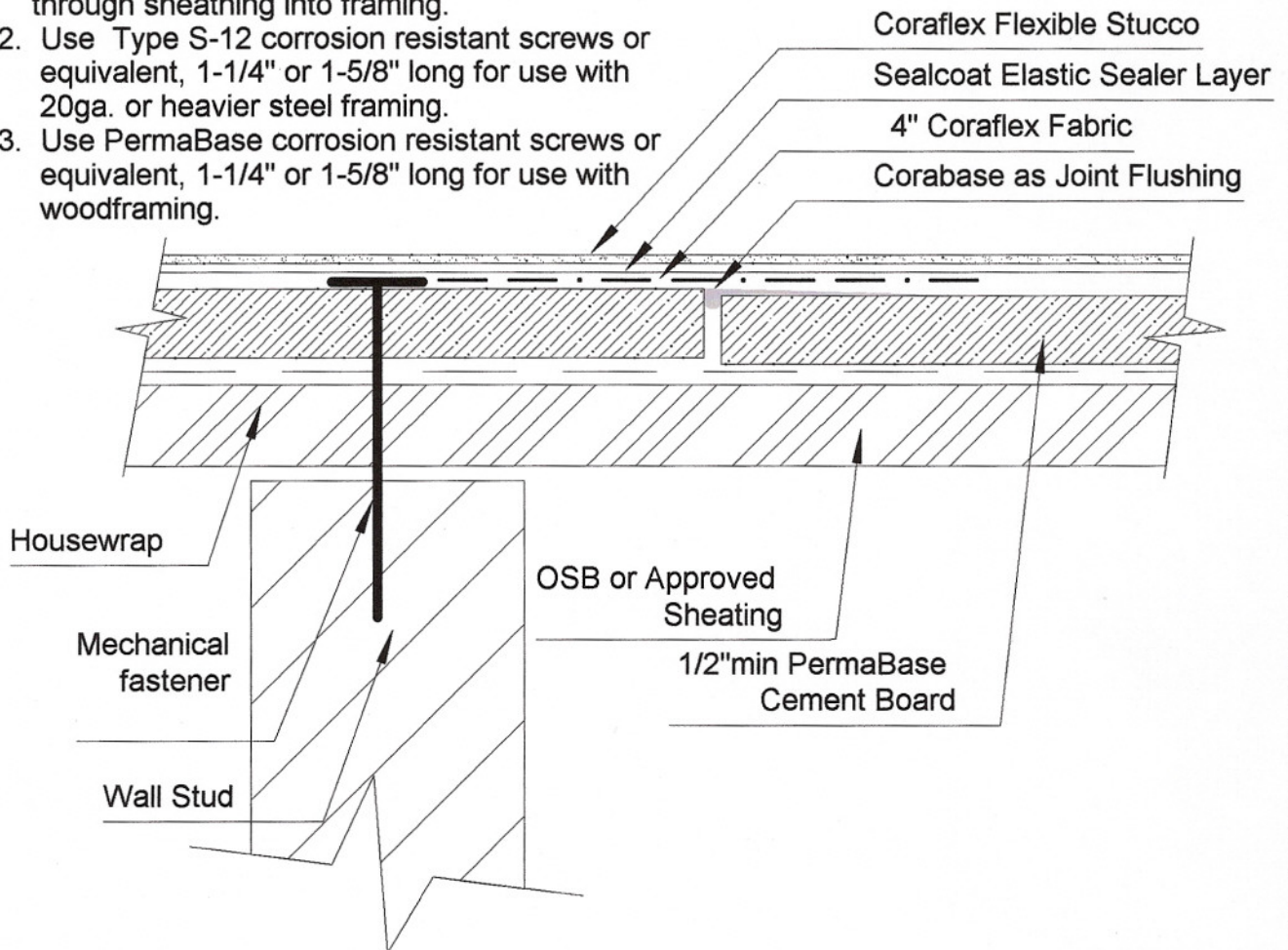


Coraflex Flexible Stucco over Permabase Wallboard

1. PermaBase must be mechanically attached through sheathing into framing.
2. Use Type S-12 corrosion resistant screws or equivalent, 1-1/4" or 1-5/8" long for use with 20ga. or heavier steel framing.
3. Use PermaBase corrosion resistant screws or equivalent, 1-1/4" or 1-5/8" long for use with woodframing.



GENERAL NOTES:

- APPROVED FOR ALL SEALOFLEX WARRANTIES
- FOLLOW STEPS FOR ANY NECESSARY PRIMING AS OUTLINED IN SPECIFICATIONS MANUAL
- FOLLOW STEPS FOR APPLICATION AS OUTLINED IN SPECIFICATIONS MANUAL
- ALL SEALOFLEX FABRIC TO OVERLAP A MIN. OF 3" WHEN TWO PIECES COME TOGETHER
- ALL SEALOFLEX FABRIC TO OVERLAP A MIN. OF 3" WHEN THERE IS A CHANGE IN PLANE
- USE TWO SEPARATE PIECES OF SEALOFLEX FABRIC AT EDGES AND PENETRATIONS