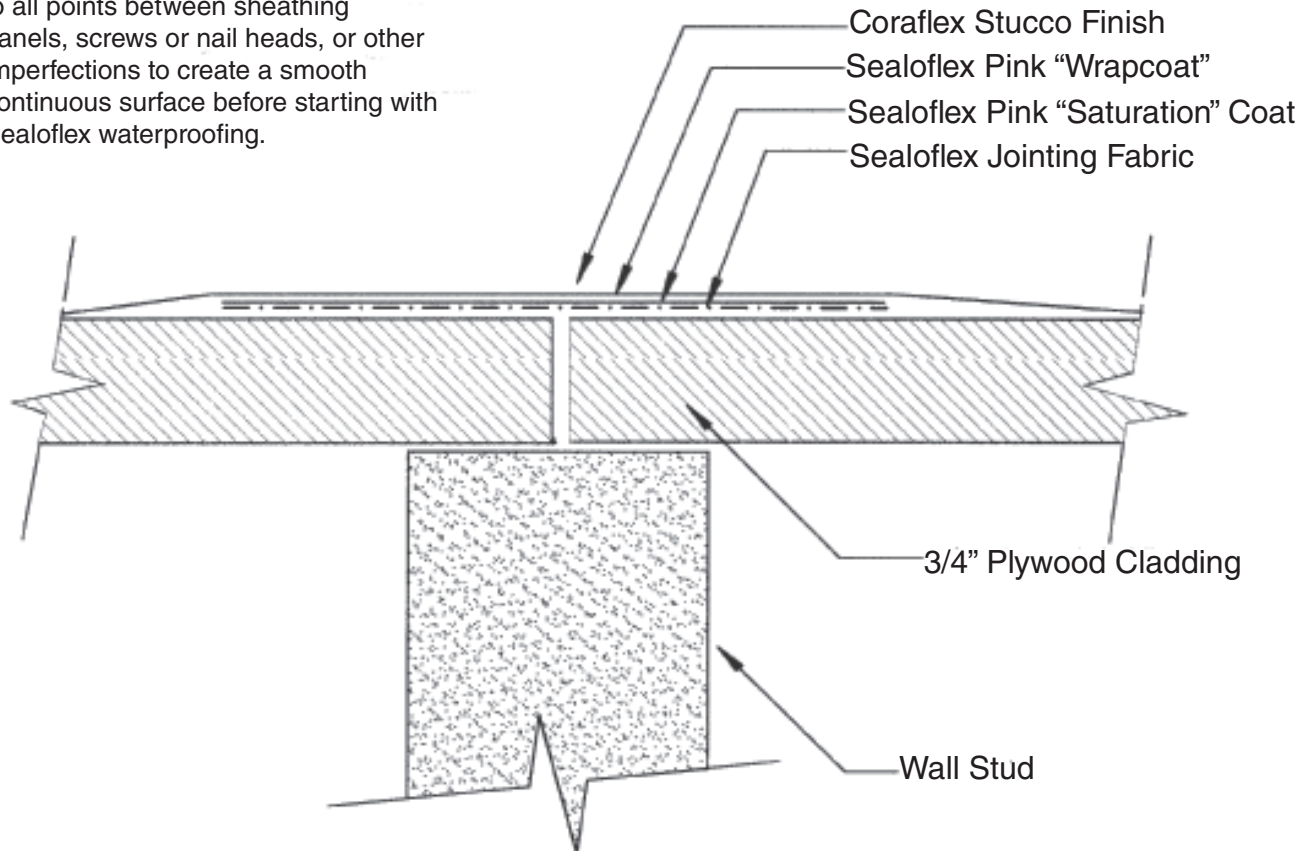


Stucco Finish over Plywood Joint

NOTE: Apply Sealoflex Buttergrade to all points between sheathing panels, screws or nail heads, or other imperfections to create a smooth continuous surface before starting with Sealoflex waterproofing.



General Notes

- Approved for all Sealoflex warranties.
- Follow steps for any necessary priming as outlined in specifications manual.
- Follow steps for application as outlined in specifications manual.
- All Sealoflex fabric to overlap a minimum of 3" when 2 pieces come together.
- All Sealoflex fabric to overlap a minimum of 3" when there is a change in plane.
- Use two separate pieces of Sealoflex fabric at edges and penetrations.