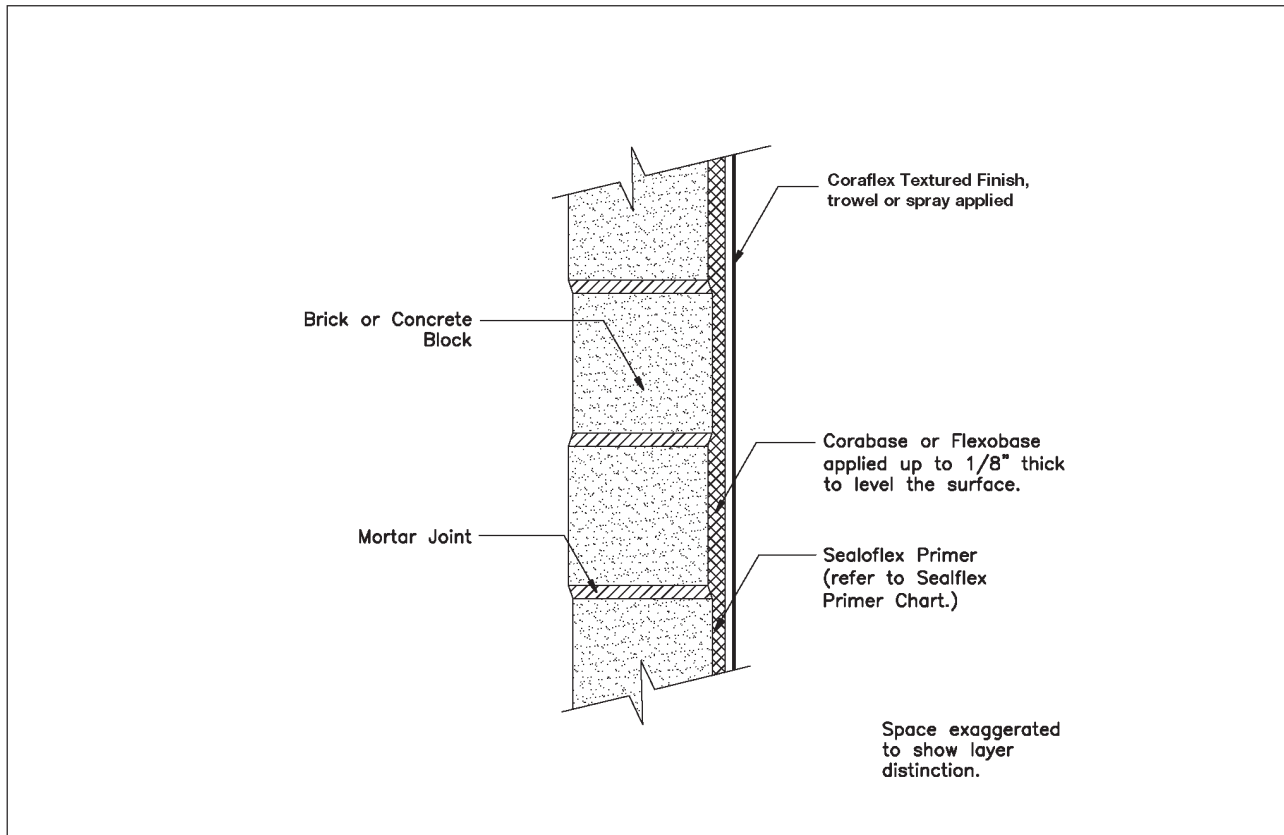


2.1.5 Coraflex Textured Finish System

Exterior Application over Masonry Structures



Description

Coraflex™ for brick or CMU block exteriors is designed to offer a high quality flexible and waterproof finish on the exterior of masonry structures giving an aesthetically pleasing textured finish appearance. The system provides a breathable yet water impermeable layer to the walls. The system provides for superior sealing at cracks or cold joints, around window and door openings, which generally presents a major challenge to both architect and builder.

Advantages

Coraflex™ offers the following benefits:

- Allows for easy waterproofing of door and window openings and sills
- Effectively waterproofs the building exterior.
- Allows for insulation to be protected from impact damage. Because it's inside the structure where it belongs unlike conventional EIF systems
- Flexibility of the products eliminates cracking
- Easily applied using conventional texture spray equipment, or trowel
- Mildew and algae resistant

Colors

Coraflex™ is available in a range of attractive colors.

Instructions for Use

Surface Preparation

Clean the surfaces to receive the Coraflex System™ to provide a sound, dry dust free surface.

Priming

Concrete, Stucco, Masonry:

Prime with Sealobond Primer™ at 250 sq. ft./gal.

SEALOFLEX INC.

CORPORATE OFFICES

2520 Oscar Johnson Drive
Charleston, SC 29405
Tel: (843) 554-6466
(800) 770-6466
Fax: (843) 554-6458
Website: www.Sealoflex.com
E-mail: info@sealoflex.com

SALES OFFICE

CHARLESTON, SC
HAMBURG, GERMANY
CANTERBURY, KENT, U.K.

Sealoflex®

Waterproofing Systems

LIMITED WARRANTY

Sealoflex warrants its products to be free of manufacturing defects and that they will meet Sealoflex's current published physical properties when applied in accordance with Sealoflex's directions. There are no other warranties by Sealoflex of any nature whatsoever, expressed or implied, including any warranty of merchantability of fitness for a particular purpose in connection with this product. Sealoflex Inc. shall not be liable for damages of any sort, including remote or consequential damages, resulting from any claimed breach of any warranty whether expressed or implied, including any warranty of merchantability of fitness for a particular purpose or from any other cause whatsoever.

FEBRUARY 2010

Application

Smoothing of Surface

Corabase™ or Flexobase™ is applied to the masonry surface, to fill in block or brick joints and to level off surface between individual blocks or bricks to create a smooth surface. Where brick joints are deep, it is necessary to apply the Corabase™ in two passes to eliminate the brick pattern.

Sealing of Joints or Cracks

After the Corabase™ has hardened, sealing of cracks and joints is commenced. After applying Corabase™, repair cracks with Sealoflex Pink® and Sealoflex Jointing Fabric™. This is done by placing 4" Sealoflex Jointing Fabric™ symmetrically over the joint or the position of the crack and applying a generous coat of Sealoflex Pink® through the fabric. At window and door openings the reinforced Sealoflex is applied from the face of the building to beyond where the door or window frame will terminate on the interior. It is important to wrap all such corners and perimeters of openings in this manner to ensure a good waterproof seal. This is achieved by placing 4" or 6" Sealoflex Jointing Fabric™ symmetrically over the detail area before applying a generous coat of Sealoflex Pink® through the fabric.

Adjacent rows of fabric should be overlapped by 3". Ensure that overlaps are fully saturated.

Final Finish

Mask off door and window frames and any other areas not to accept the Coraflex™. The Coraflex™ is applied by texture spray equipment, hopper gun or by trowel. Trowelling will provide a smooth tight looking finish whereas spraying will give a slightly more texture appearance. Spray finish may be achieved in a single application. The rate of application will vary according to application method or texture desired.

Coverage

- Sealoflex Pink® 60 sq.ft./gal. in fabric areas only
- 4" or 6" Sealoflex Jointing Fabric™ 1 roll/300 LF
- Corabase™ 60-120 sq.ft./50 lb./bag
- Flexobase™ 60-120 sq.ft./50 lb./bag
- Coraflex™ 80-100 sq.ft./5 gal. (approx.)
- Sealobond Primer™ 250 sq.ft./gal.

Coverages Rates will vary depending upon roughness and porosity of surface, e.g., split face block.

Cleaning

All Sealoflex Products used in this specification may be rinsed off surfaces and equipment while uncured. All cured material can be removed with Sealoflex Quickclean.

For this and/or related products, please refer to individual product data sheets, System Application Guides, Products MSDS, Primer Chart, Fabric Chart.

IMPORTANT NOTE: Always check our website, www.sealoflex.com to determine if the printed literature you are reading is the most current version available.