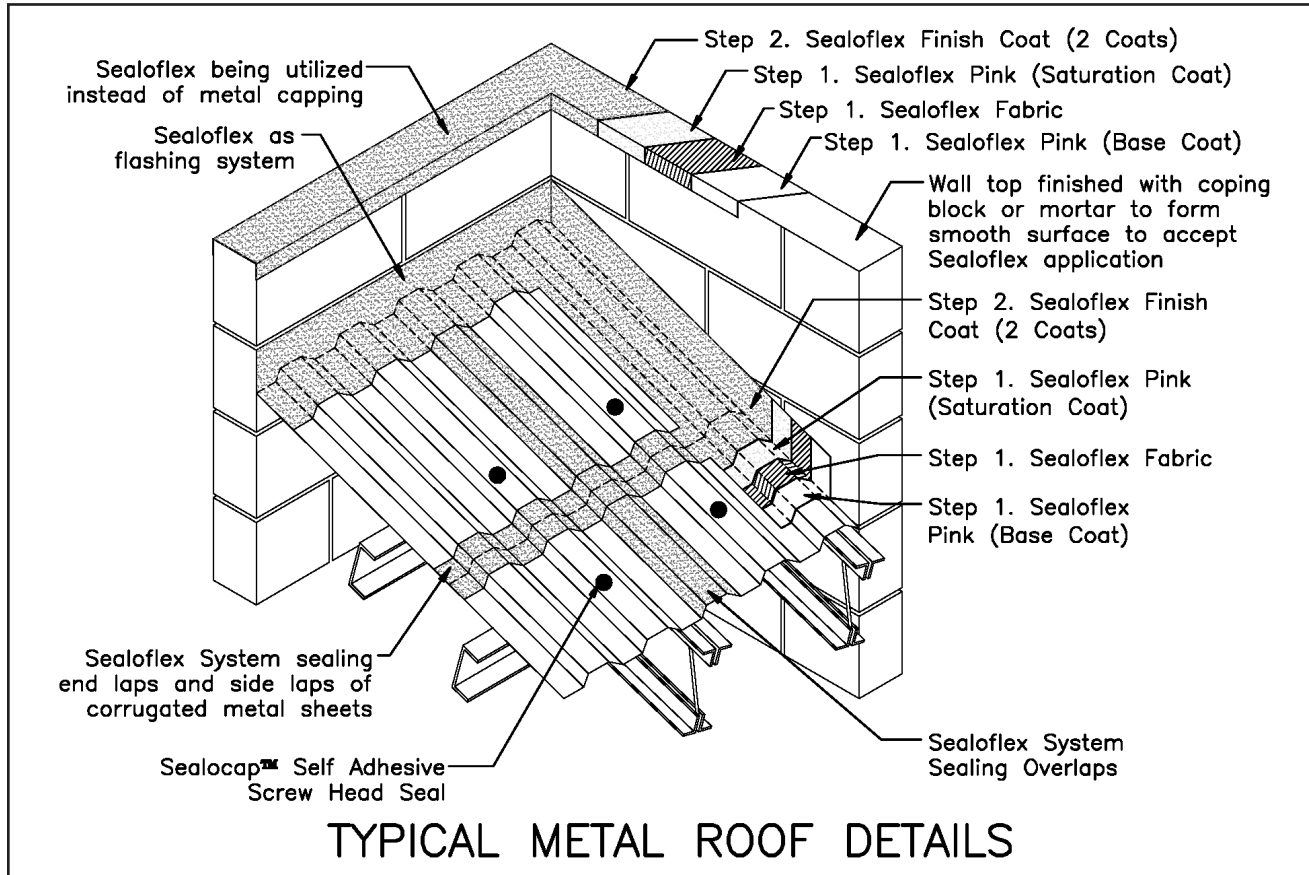


# 1.4.1 Flashings and Copings

## Application Guide



### Preparation

Prepare substrate to be free of all loose and flaking particles, oil, grease, and laitence

Apply minimum 3/8" x 3/8" fillet of a single component polyurethane caulk at junctions of vertical and horizontal surfaces.

**NOTE:** Low areas on both wood and concrete decks can be filled with Sealopatch™ prior to application of fabric reinforcement.

### Priming

Prime all previously rusted areas and any other ungalvanized or unpainted ferrous metal with Rust-X 2020™ to cure for a minimum of 3 hours. Followed by Sealoflex Metal Etch Primer™. Based on substrate and/or surface conditions primers will vary. Primers to consider are Dampseal 101™, Sealobond Primer™, Sealoment Plus™, Rust-X 2020™ and/or Metal Etch Primer™. Refer to Sealoflex Primer chart.

### Application

Brush on a heavy application of Sealoflex Pink® "base coat" to the area to be treated. Embed the Sealoflex fabric into the wet Sealoflex Pink®, and immediately fully saturate fabric. Allow to dry. Apply Sealoflex Finish Coat™ in 2 coats by brush, spray or roller

over the entire area. Allow to dry. Adjacent runs of fabric must overlap by 3". Ensure that overlaps of fabric are fully saturated.

### Parapet Walls

Apply the Sealoflex System to the interior surface of the parapet wall and over the crown of the wall ending neatly at the interface of the surface and the top of the wall. This replaces the need for metal caps to the top of the walls.

### Existing Metal Copings

Where metal caps to parapet walls exist, apply the Sealoflex system directly over the prepared metal surface paying particular attention to joints in metal sections as well as terminations and junctions to other building elements.

## SEALOFLEX INC.

### CORPORATE OFFICES

2520 Oscar Johnson Drive  
Charleston, SC 29405

Tel: (843) 554-6466

(800) 770-6466

Fax: (843) 554-6458

Website: [www.Sealoflex.com](http://www.Sealoflex.com)

E-mail: [info@sealoflex.com](mailto:info@sealoflex.com)

### SALES OFFICE

CHARLESTON, SC

HAMBURG, GERMANY

CANTERBURY, KENT, U.K.

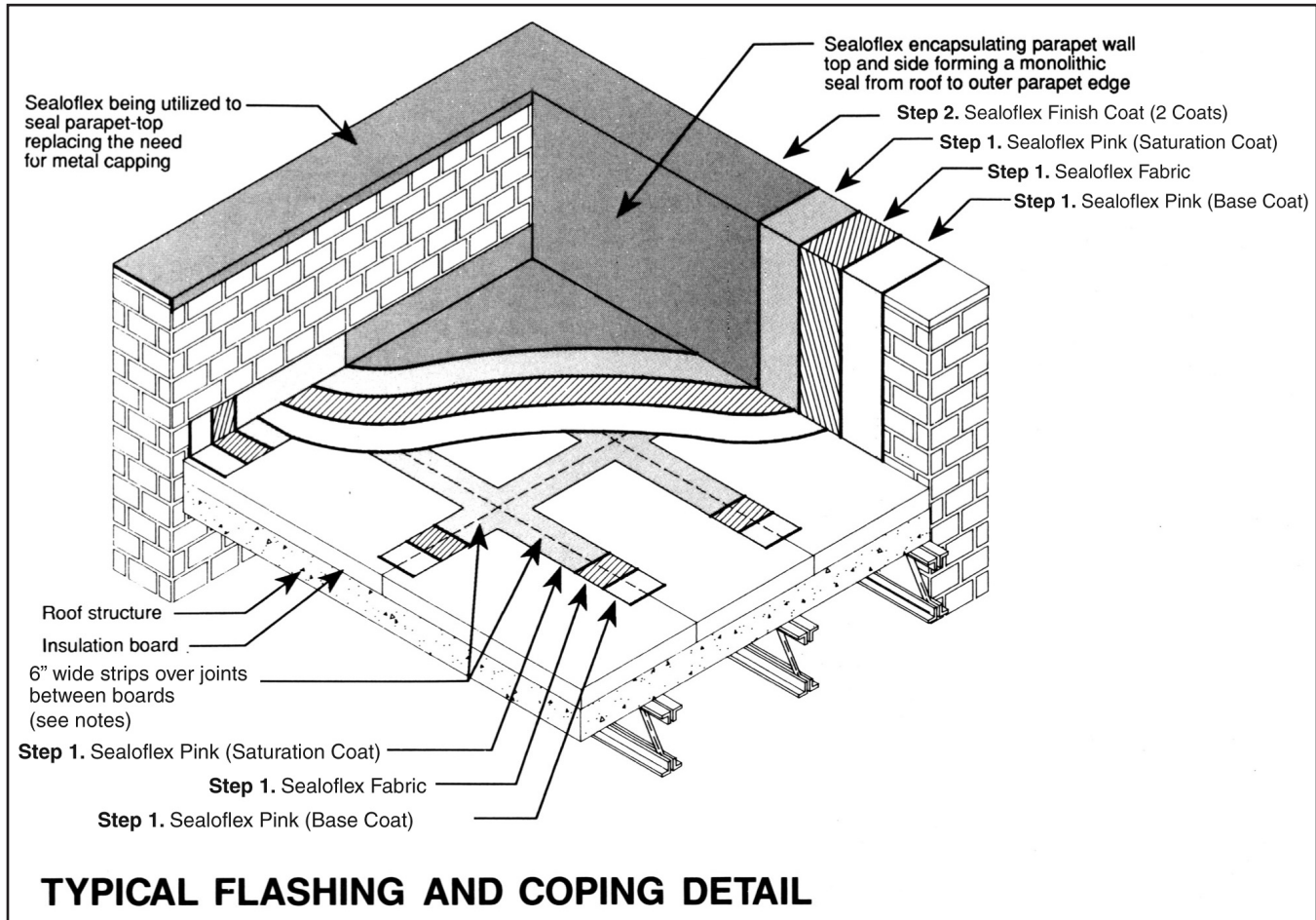
# Sealoflex®

## Waterproofing Systems

### LIMITED WARRANTY

Sealoflex warrants its products to be free of manufacturing defects and that they will meet Sealoflex's current published physical properties when applied in accordance with Sealoflex's directions. There are no other warranties by Sealoflex of any nature whatsoever, expressed or implied, including any warranty of merchantability of fitness for a particular purpose in connection with this product. Sealoflex Inc. shall not be liable for damages of any sort, including remote or consequential damages, resulting from any claimed breach of any warranty whether expressed or implied, including any warranty of merchantability of fitness for a particular purpose or from any other cause whatsoever.

FEBRUARY 2010



### Flashings

Apply the Sealoflex system 3" up the vertical surfaces and 3" onto horizontal surfaces using a minimum of 6" Sealoflex Fabric™ as reinforcing.

### Important Recommendations

Do not apply Sealoflex® if rain is imminent or at temperatures below 45°F.

System must be totally dry before the onset of freezing conditions.

For this and/or related products, please refer to individual product data sheets, System Application Guides, Products MSDS, Primer Chart, Fabric Chart.

**IMPORTANT NOTE:** Always check our website, [www.sealoflex.com](http://www.sealoflex.com) to determine if the printed literature you are reading is the most current version available.