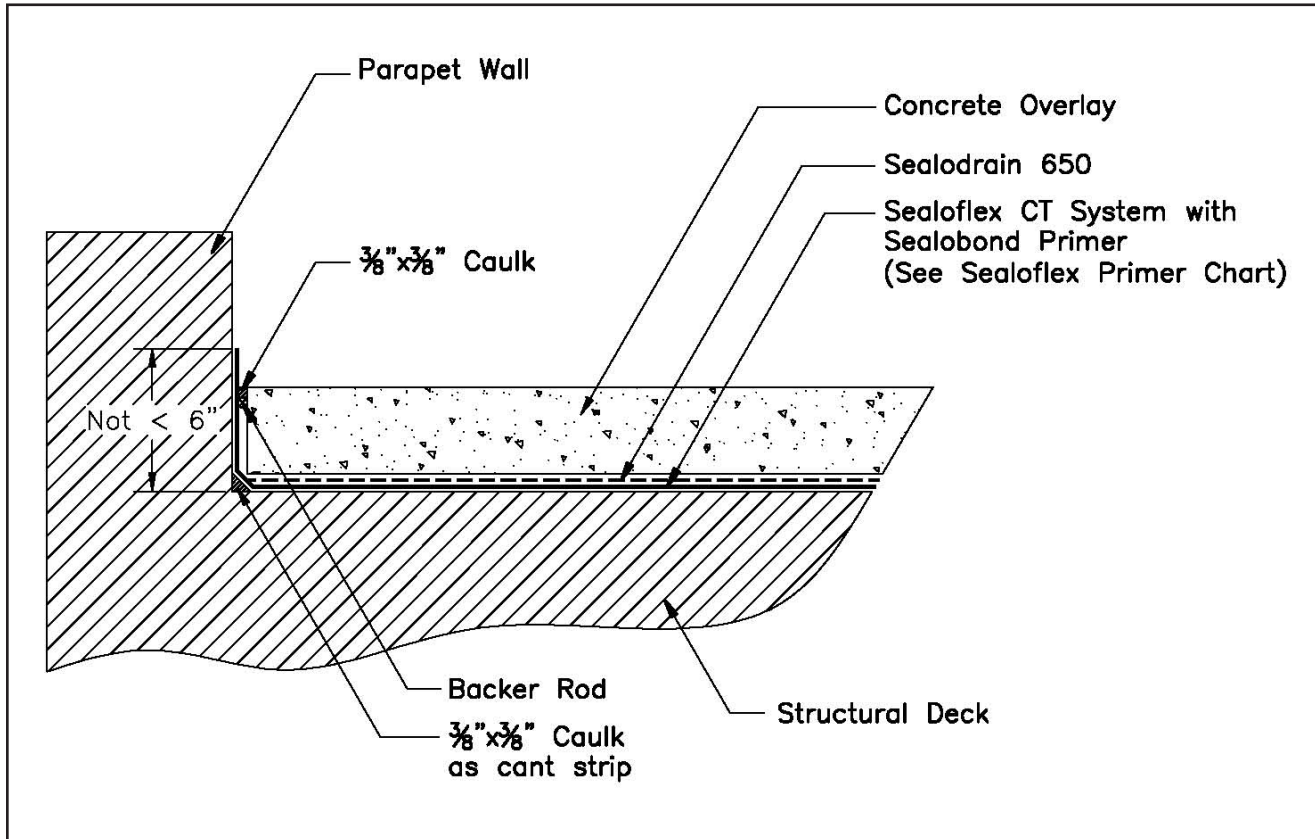


1.3.1.3 Plaza Decks with Concrete Topping

Application Guide



Inspection

Inspect deck area carefully paying particular attention to the following points:

- Deck must have adequate slope to ensure proper drainage.
- Structural integrity of the deck.

Wooden Decks

- Ideally the structure should consist of 3/4" tongue and groove exterior grade plywood supported by joists at 16" centers and glued and screwed into position
- Joints in the plywood should be over support joists, to eliminate independent vertical movement of the boards

Concrete Decks

- Where the substrate is reinforced concrete, the location of expansion joints is left to the discretion of the structural engineer.

- Where concrete toppings exist, 1/4" expansion joints should be present at least 10 feet on center to accommodate thermal movement and to avoid random cracking of the concrete below the Sealoflex application
- It is recommended that all concrete be tested for moisture content prior to application of the Sealoflex CT™ System. Structural concrete moisture should be < 8%. Cellular Lightweight concrete moisture should be < 19%. If the moisture content is greater than specified, it is recommended that Dampseal 101™ be applied.

NOTE: Low areas on both wood and concrete decks can be filled with Sealopatch™ prior to application of fabric reinforcement.

Preparation

Apply minimum 3/8" x 3/8" fillet of a single component polyurethane caulk at junctions of vertical and horizontal surfaces.

Repair imperfections which may impair application of fabric by applying Sealoflex Buttergrade™ or Sealopatch™ using a sheetrock knife or stainless steel trowel. Allow to dry.

Priming

Based on substrate and/or surface conditions primers will vary. Primers to consider are Dampseal 101™, Sealobond Primer™, Sealoment Plus™, Rust-X 2020 and/or Metal Etch Primer™. Refer to Sealoflex Primer chart.

SEALOFLEX INC.

CORPORATE OFFICES

2520 Oscar Johnson Drive
Charleston, SC 29405
Tel: (843) 554-6466
(800) 770-6466

Fax: (843) 554-6458

Website: www.Sealoflex.com

E-mail: info@sealoflex.com

SALES OFFICE

CHARLESTON, SC
HAMBURG, GERMANY
CANTERBURY, KENT, U.K.

LIMITED WARRANTY

Sealoflex warrants its products to be free of manufacturing defects and that they will meet Sealoflex's current published physical properties when applied in accordance with Sealoflex's directions. There are no other warranties by Sealoflex of any nature whatsoever, expressed or implied, including any warranty of merchantability of fitness for a particular purpose in connection with this product. Sealoflex Inc. shall not be liable for damages of any sort, including remote or consequential damages, resulting from any claimed breach of any warranty whether expressed or implied, including any warranty of merchantability of fitness for a particular purpose or from any other cause whatsoever.

FEBRUARY 2010

Sealoflex®

Waterproofing Systems

Application

1. Flash junctions between deck, walls, posts, and any other adjacent surfaces with Sealoflex fabric by applying Sealoflex CT Pink™ 3" minimum up the vertical surface and onto the deck. Immediately embed the fabric into the wet Sealoflex CT Pink™ working fabric in well with a dry brush. Allow to dry. Apply saturation coat CT Pink™ to the surface to fully saturate the fabric from above. In the same way apply the CT Pink/Sealoflex Fabric/CT Pink over all seams between plywood boards.

NOTE: Ensure that the Sealoflex CT System™ is installed at a minimum of 3" above concrete overlay.

2. Apply a base coat of Sealoflex CT Pink™ over area. While basecoat is still wet embed Sealoflex Fabric™. Use a dry roof brush over the fabric to fully embed the fabric. Allow to dry. Apply saturation coat of Sealoflex CT Pink™. Allow to dry. Adjacent runs of fabric must overlap by 3" minimum. Ensure that overlaps of fabric are fully saturated.
3. Once the Sealoflex CT Pink™ is dry trim excess fabric at the edges with a razor knife.
4. Apply two generous coats of Sealoflex CT Top™ to the area and flashings using a roller, brush or airless spray. Allow first coat to dry before applying second coat.
5. Ensure that the Sealoflex CT™ system has cured before the application of tile or outdoor carpeting. (7 days)

NOTE: Each individual coat of any Sealoflex CT™ product must be dry before applying any subsequent coat of any Sealoflex CT™ product. The entire Sealoflex® System must be full cured prior to installing any finishes, e.g., Coraflex™, tile, carpet, pavers, etc. This will ensure proper curing and that no vapor entrapment occurs.

DO NOT use Sealoflex Deck Fabric™ with CT Products™; always use Sealoflex (Regular) Fabric™.

Concrete Topping

Before placing of any topping material carefully check the surface of the Sealoflex CT™ application for quality and possible damage. Place the Sealodrain™ drainage mat over the entire area which is to receive topping. Ensure that adjacent sheets of drainage mat are properly joined to form one continuous sheet. The concrete may then be placed directly over the drainage mat. Refer to the following:

- Drawing #PD5, the Edge Detail drawing for Plaza Decks, to ensure correct positioning of concrete, metal, and drip edge
- If expansion joints exist in the structural concrete below the waterproofing, it is very important that an expansion joint also be formed in the topping to align exactly with the joint below. Any joints formed in the topping should be properly sealed to avoid foreign material from falling into joints

Total product requirements for the project will be:

- Primer-Refer to Primer Chart
- Sealoflex CT Pink™ 30 sq.ft./gal.
- Sealoflex CT Top™ 70 sq.ft./gal.
- 12" Sealoflex Fabric 300 LF/roll
- Sealopatch™ or Buttergrade™ if necessary
- 40" Sealoflex Fabric 324 LF/roll

Recommendation: It is well advised that a flood test be conducted prior to installation of any deck toppings over the cured Sealoflex System.

WARNING!

DO NOT plunge, submerge, dip, etc. applicator tools (rollers, brushes, etc.) into CT™ Buckets due to static electricity buildup. Sparks/Fire may result. Always **pour** CT™ products from the container onto the substrate.

CT™ PRODUCTS ARE FLAMMABLE!

Electrostatic charge may accumulate and create a hazardous condition when handling or applying CT™ Products.

**ALWAYS USE PROPER
GROUNDING PROCEDURES.**

**ALWAYS HAVE A CO₂ FIRE
EXTINGUISHER WITHIN
IMMEDIATE REACH OF THE
APPLICATION AREA.**

For this and/or related products, please refer to individual product data sheets, System Application Guides, Products MSDS, Primer Chart, Fabric Chart.

IMPORTANT NOTE: Always check our website, www.sealoflex.com to determine if the printed literature you are reading is the most current version available.