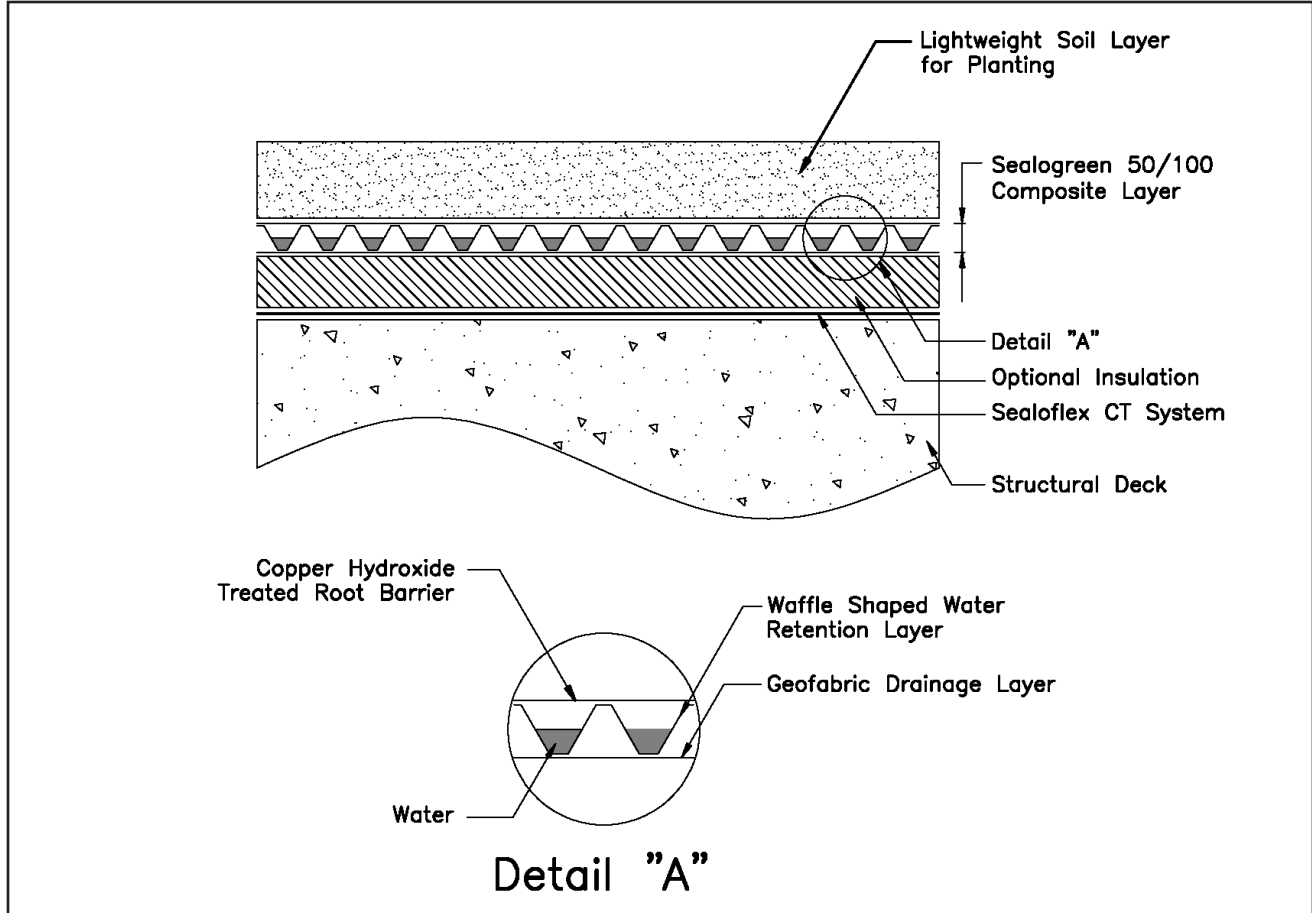


1.2.1.3 Green Roofs

Application Guide



Inspection

Inspect roof carefully paying particular attention to the following points:

- Structural integrity of the surface.
- Where the substrate is reinforced concrete, the location of expansion joints is left to the discretion of the structural engineer.
- Surface must have adequate slope to ensure proper drainage. The recommended slope should be approximately 1/4" per foot slope.

Preparation

Apply minimum 3/8" x 3/8" fillet of a single component polyurethane caulk at junctions of vertical and horizontal surfaces.

Priming

Prime all concrete, masonry with Sealobond Primer™ at a rate of 250 sq.ft./gal. If there is any doubt regarding the moisture content of the concrete it is strongly advised to use Dampseal 101™ as a surface treatment of the concrete. This will seal the surface of the concrete and prevent the formation of blisters in the subsequently applied layers. Carefully follow directions in the Dampseal 101™ technical brochure. Most other surfaces do not require priming provided that they are sound and clean. However, if any doubt, contact Sealoflex, Inc. for specific recommendations.

Application

1. Repair large imperfections in the roof surface using Sealopatch® Repair Mortar.
2. Lay the insulation board onto the surface if insulation is required by the specifier.
3. Flash junctions between roof deck and walls, penetrations and any other adjacent surfaces with 12" wide Sealoflex fabric™ by applying a heavy layer of Sealoflex CT Pink™ 6" up the vertical surface and 6" onto the deck and immediately embedding the fabric into the wet Sealoflex CT Pink™ working fabric in well with a dry paint brush. Allow to dry. Apply more CT Pink™ to the surface to fully saturate the fabric from above.

SEALOFLEX INC.

CORPORATE OFFICES

2520 Oscar Johnson Drive
Charleston, SC 29405
Tel: (843) 554-6466
(800) 770-6466

Fax: (843) 554-6458

Website: www.Sealoflex.com

E-mail: info@sealoflex.com

SALES OFFICE

CHARLESTON, SC
HAMBURG, GERMANY
CANTERBURY, KENT, U.K.

Sealoflex®

Waterproofing Systems

LIMITED WARRANTY

Sealoflex warrants its products to be free of manufacturing defects and that they will meet Sealoflex's current published physical properties when applied in accordance with Sealoflex's directions. There are no other warranties by Sealoflex of any nature whatsoever, expressed or implied, including any warranty of merchantability of fitness for a particular purpose in connection with this product. Sealoflex Inc. shall not be liable for damages of any sort, including remote or consequential damages, resulting from any claimed breach of any warranty whether expressed or implied, including any warranty of merchantability of fitness for a particular purpose or from any other cause whatsoever.

FEBRUARY 2010

4. Apply a heavy layer of Sealoflex CT Pink™ onto the surface and immediately embed the Sealoflex Fabric™ onto the wet base coat of Sealoflex CT Pink™. Once the fabric is in position, using a roofing brush, ensure the fabric is fully embedded into the base coat of Sealoflex CT Pink™. Allow to dry.

NOTE: Use Sealoflex Fabric™ not Sealoflex Deck Fabric™ with Sealoflex CT Products™.

5. Apply a saturation coat of Sealoflex CT Pink™ over the entire area. Allow to dry. Adjacent runs of fabric must overlap by 3" minimum. Be sure that overlaps of fabric are fully saturated.

6. Once the CT Pink™ is dry, trim off the excess fabric at the edges with a razor knife.

7. Apply two generous coats of Sealoflex CT Top™ to the whole area and flashings using a roller or airless sprayer. Allow first coat to become dry before applying second coat.

8. Ensure that the Sealoflex CT™ System has cured before placement of insulation or the Sealogreen™ mats. Also, carefully check the surface of the Sealoflex CT™ application for quality and possible damage.

NOTE: Each individual coat of any Sealoflex CT™ product must be dry before applying any subsequent coat of any Sealoflex CT™ product. The entire Sealoflex® System must be full cured prior to installing any finishes, e.g., Coraflex™, tile, carpet, pavers, etc. This will ensure proper curing and that no vapor entrapment occurs.

For this and/or related products, please refer to individual product data sheets, System Application Guides, Products MSDS, Primer Chart, Fabric Chart.

Roof Garden Application

Place the Sealogreen™ 50/100 roof garden mat over the entire area which is to receive the roof garden. If required, a single part polyurethane caulk may be used to spot adhere the mats to keep them from being lifted by wind during construction. Ensure that adjacent sheets of Sealogreen™ 50/100 are properly joined together to form one continuous sheet. This is to ensure that the soil layer to be placed above does not have the possibility to be washed into the drains. The soil layer to support the plant life is then placed evenly over the surface to the specified depth depending on the types of plants to be grown.

Total product requirements for the project will be:

- Sealoflex CT Pink™ 30 sq.ft./gal.
- Sealoflex CT Top™ 70 sq.ft./gal.
- 6" Sealoflex fabric™ 300 LF/Roll
- 40" Sealoflex fabric™ 324 LF/Roll
- Sealogreen™ 50/100 200 sq.ft./Roll
- Sealopatch™ if necessary

Equipment requirements for the project will be:

- Sheetrock knife or stainless steel trowel
- A good pair of scissors
- Roof brush
- 3" paint brushes for flashings
- 3/4" nap rollers with long handles
- Airless sprayer (optional depending on project size)

WARNING!

DO NOT plunge, submerge, dip, etc. applicator tools (rollers, brushes, etc.) into CT™ Buckets due to static electricity buildup. Sparks/Fire may result. Always **pour** CT™ products from the container onto the substrate.

CT™ PRODUCTS ARE FLAMMABLE!

Electrostatic charge may accumulate and create a hazardous condition when handling or applying CT™ Products.

**ALWAYS USE PROPER
GROUNDING PROCEDURES.**

**ALWAYS HAVE A CO₂ FIRE
EXTINGUISHER WITHIN
IMMEDIATE REACH OF THE
APPLICATION AREA.**

IMPORTANT NOTE: Always check our website, www.sealoflex.com to determine if the printed literature you are reading is the most current version available.