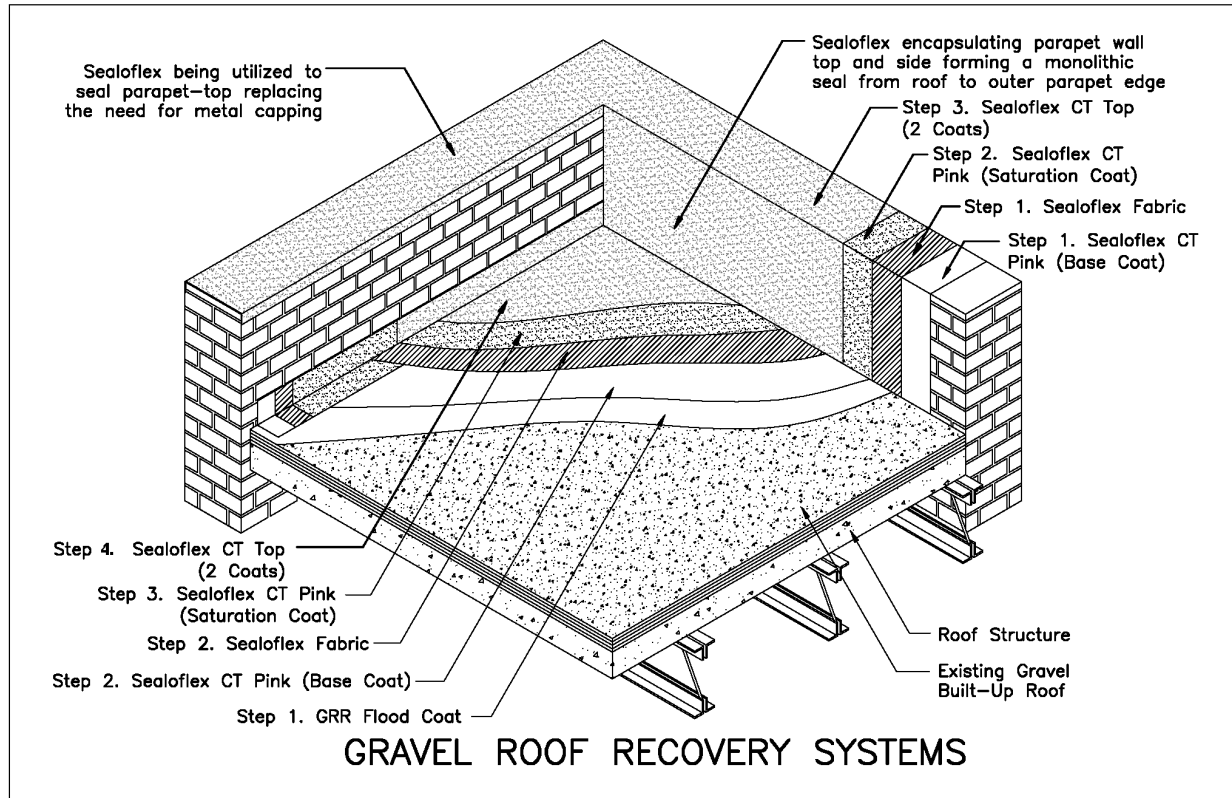


1.2.1.2 Gravel Roof Recovery System

Application Guide



Inspection

Inspect roof carefully paying particular attention to the following points:

- Structural integrity of the roof.
- The condition of the insulation with regard to moisture content. In most cases saturated insulation must be cut out and replaced.
- Roof must have adequate slope to ensure proper drainage.

Preparation

All loose gravel must be removed from the roof by vacuum or conventional means. Remove all loose sand and grime from the roof surface by powerwashing. This can be done in a single operation using a system such as Hydrovac® or Vac-It-All®.

Application

1. GRR Flood Coat™ is applied to the surface of the clean roof at the rate of approximately 12-18 gal/100 sq.ft. depending upon the surface condition. (Coverage may be less on very rough surfaces. If so, it may be necessary to apply in two layers to facilitate quick drying.) GRR Flood Coat™ is poured from a container. Then spread over the roof area using a rubber squeegee. The product is spread so that squeegee runs over the peaks of the highest protruding gravel.

Caution: Prior to undertaking step 2, be sure that GRR Flood Coat™ has completely dried.

2. Flash junctions between the roof walls, roof penetrations, and any other adjacent surfaces with 6" or 12" Sealoflex Fabric™ and Sealoflex CT Pink™. Allow to dry.

3. Apply a generous "base coat" of Sealoflex CT Pink™. Lay the Sealoflex Fabric (not Sealoflex Deck Fabric), into the wet Sealoflex CT Pink™ and immediately apply a "saturation coat" of Sealoflex CT Pink™. Allow to dry overlapping fabric by 3". Be sure overlaps are fully saturated.
4. Apply two generous coats of Sealoflex CT Top™ to the entire area and flashings using a roller or airless spray. Allow first coat to dry before applying second coat.

NOTE: Typically, aged gravel roofs have poor slope/poor drainage. Therefore, the Sealoflex CT™ System is strongly recommended. GRR Flood Coat™ is **NOT** a waterproof compound; it is only water resistant. Therefore, even after it is completely dry, it is important that no ponding conditions occur, as GRR Flood Coat™ will become unstable.

Please contact Sealoflex® Technical Department for details.

SEALOFLEX INC.

CORPORATE OFFICES

2520 Oscar Johnson Drive
Charleston, SC 29405
Tel: (843) 554-6466
(800) 770-6466
Fax: (843) 554-6458
Website: www.Sealoflex.com
E-mail: info@sealoflex.com

SALES OFFICE

CHARLESTON, SC
HAMBURG, GERMANY
CANTERBURY, KENT, U.K.

Sealoflex®

Waterproofing Systems

LIMITED WARRANTY

Sealoflex warrants its products to be free of manufacturing defects and that they will meet Sealoflex's current published physical properties when applied in accordance with Sealoflex's directions. There are no other warranties by Sealoflex of any nature whatsoever, expressed or implied, including any warranty of merchantability of fitness for a particular purpose in connection with this product. Sealoflex Inc. shall not be liable for damages of any sort, including remote or consequential damages, resulting from any claimed breach of any warranty whether expressed or implied, including any warranty of merchantability of fitness for a particular purpose or from any other cause whatsoever.

JUNE 2010

Approximate total product requirements for the project will be:

- GRR Flood Coat™ 12-18 gal/100 sq.ft.
- Sealoflex CT Pink™ 30 sq.ft./gal.
- Sealoflex CT Top™ 70 sq.ft./gal.
- 6" or 12" Sealoflex Fabric™ for details and flashings 300 ft./roll
- 40" Sealoflex fabric 324 LF

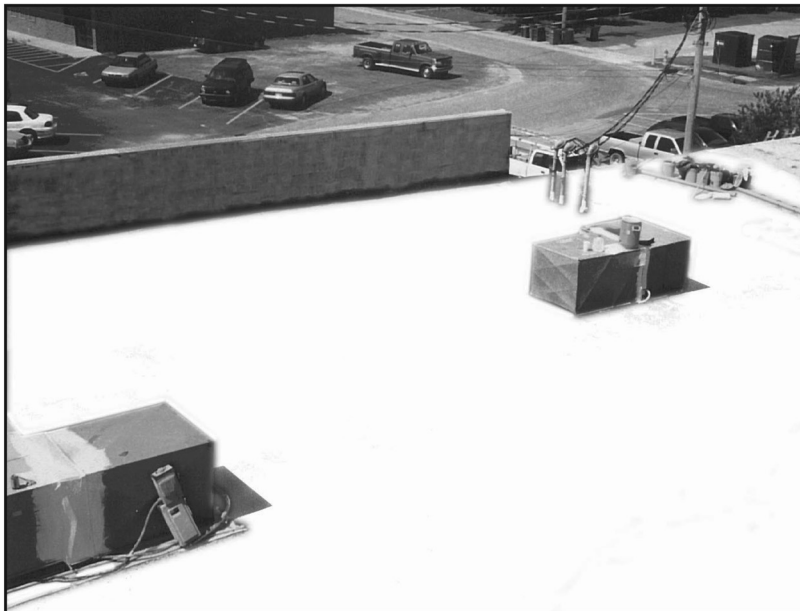
Equipment requirements for the project will be:

- Rubber squeegees
- Soft broom
- 3" paint brushes for flashing
- 3/4" nap rollers with long handles
- Airless sprayer (optional depending on project size)

NOTE: System must be totally dry before the onset of freezing conditions.



Gravel Roof Before



Completed Gravel Roof Recovery System

WARNING!

DO NOT plunge, submerge, dip, etc. applicator tools (rollers, brushes, etc.) into CT™ Buckets due to static electricity buildup. Sparks/Fire may result. Always **pour** CT™ products from the container onto the substrate.

CT™ PRODUCTS ARE FLAMMABLE!

Electrostatic charge may accumulate and create a hazardous condition when handling or applying CT™ Products.

**ALWAYS USE PROPER
GROUNDING PROCEDURES.**

**ALWAYS HAVE A CO₂ FIRE
EXTINGUISHER WITHIN
IMMEDIATE REACH OF THE
APPLICATION AREA.**

For this and/or related products, please refer to individual product data sheets, System Application Guides, Products MSDS, Primer Chart, Fabric Chart.

IMPORTANT NOTE: Always check our website, www.sealoflex.com to determine if the printed literature you are reading is the most current version available

1.2.1.2 June 2010